



## Smile BIG Richland!



Did you know, Dental Disease is **preventable**? However, the American Dental Association reports dental care is the most common *unmet* health need of children. About 20% of children between the ages of 5 to 11 have **at least one** untreated decayed tooth. Richland Public Health's "**Smile BIG Richland!**" Pediatric Dental Health Program has provided more than 600 **FREE** dental health backpacks to area children. Our mission is to educate and prevent the prevalence of tooth decay in youth between the ages of 0 to 18. This initiative is financially supported through the Richland County Foundation and donations from national and local organizations.



Early childhood tooth decay has become the most common chronic childhood disease impacting more children than asthma. According to the ADA, more than 40% of children have tooth decay by the time they reach Kindergarten.

Children who suffer from the pain of oral health are three times more likely to miss school.

Contact Shane Myers, Health Educator at Richland Public Health, to receive a **FREE dental health backpack** for your children between the ages of 0-18. Call Shane at 419-774-3542 or email: [smyers@richlandhealth.org](mailto:smyers@richlandhealth.org). For additional information, go to [richlandhealth.org/dental](http://richlandhealth.org/dental)

## CORONAVIRUS Information and Updates

Call **419-774-4700** for vaccine registration. Visit [richlandhealth.org/covid-vaccine-qa](http://richlandhealth.org/covid-vaccine-qa) for a list of area providers. Richland County has vaccinated 55,410 individuals with at least one dose and the state of Ohio has vaccinated 7,224,847 million individuals, as of February 28.

### COVID-19 Cases from Jan. 30, 2022 to Feb. 28, 2022

Location	Cases	Deaths	Hospitalized
Richland County	711	10	38
Ohio	63,877	931	2,612

\*Visit [coronavirus.ohio.gov](http://coronavirus.ohio.gov) for more info and guidance

Quarantine Questions? Answers can be found at:  
[www.richlandhealth.org/quarantining/](http://www.richlandhealth.org/quarantining/)

### PUBLIC HEALTH NURSING

Health services for people of all ages who are residents of Richland County. Services are provided through our on-site clinic, in the community and through our home visits.

Public Health Clinic	January	YTD
Immunizations (visits).....	99.....	99
International Travel (visits).....	3.....	3
Nurse Appointments.....	0.....	0
Vaccinations (COVID/Other).....	229.....	229
<b>Total</b>		
<b>Visits</b> .....	293.....	293

All visits to the clinic are by appointment.  
Call 419-774-4700 to schedule an appointment.

Public Health Nursing	January	YTD
CMH (case contacts).....	298.....	298
Community Health Screenings.....	4.....	4
Influenza Vaccines.....	13.....	13
Lead Case Management.....	0.....	0
Newborn/Prenatal Home Visits.....	9.....	9
Cribettes distributed.....	5.....	5
School Nurses (student care YTD).....	247.....	247

### Communicable Disease Report

Infectious Disease (not flu/sti/COVID).....	7.....	7
Influenza (A&B).....	32.....	32
Hospitalizations due to Influenza.....	1.....	1
COVID-19 (Coronavirus).....	5,793.....	5,793
Hospitalizations due to COVID.....	98.....	98

### Sexually Transmitted Infections

STI Positive Results.....	56.....	56
Chlamydia.....	36.....	36
Gonorrhea.....	15.....	15
Syphilis.....	5.....	5

### WIC Services- Jan.

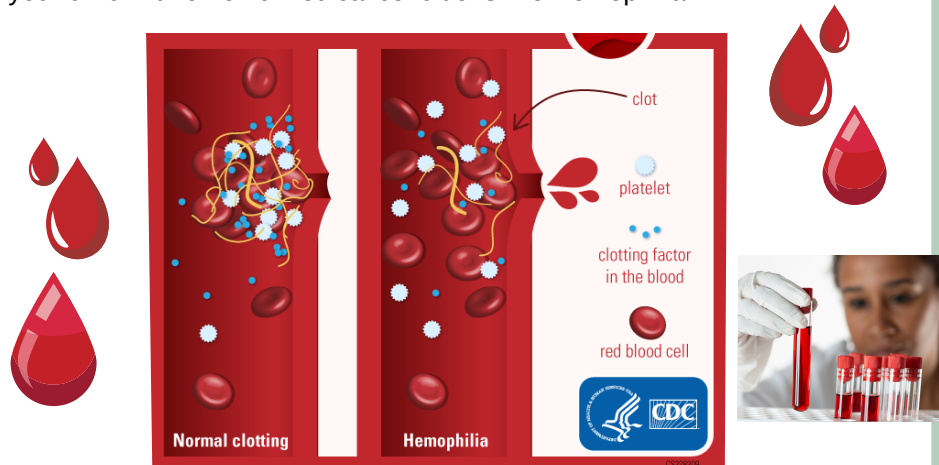
New Participants	144
Recertifications	100
Other Contacts	400
<b>Total Ashland &amp; Richland Counties:</b>	<b>644</b>



## March is National Bleeding Disorders Awareness Month

**Hemophilia** is usually an inherited bleeding disorder in which the blood does not clot properly. Spontaneous bleeding as well as severe bleeding following injuries or surgery can occur. Blood contains many proteins called clotting factors that can help to stop bleeding. People with hemophilia have low levels of either factor VIII (8) or factor IX (9) which are proteins that cause bleeding to stop.

Approximately 400 babies are born with hemophilia each year in the U.S., however, the median age of a hemophilia diagnosis is 36 months. Richland Public Health's **Children with Medical Handicaps** program (CMH) can provide you a knowledgeable Public Health Nurse to help **coordinate**, advocate and assist with **access to diagnostic and treatment services** for your child with chronic medical conditions like Hemophilia.



Want to learn more about the CMH Program and qualifications?  
Call 419-774-4540 or Visit  
[richlandhealth.org/personal/children-with-medical-handicaps-cmh/](http://richlandhealth.org/personal/children-with-medical-handicaps-cmh/)

**National Health Observances for March:** **March 6-12:** Groundwater Awareness Week; **March 22:** American Diabetes Association Diabetes Alert Day; **March 24:** World Tuberculosis (TB) Day

### Be Prepared for Severe Weather

"If you don't like the weather, just wait a few minutes" -Mark Twain. Rapid temperature changes make perfect conditions for severe weather. **March 14-20th is Ohio Severe Weather Awareness Week.** While you cannot prevent severe weather, you can plan to be safe in an emergency.

- Show household members *where* you store your **Emergency Supply Kit** and *where* to seek **safe shelter**.
- Keep a **three-day supply** of *bottled water* and *nonperishable food*, necessary *medication* and *appropriate clothing* for each household member.
- Check and update as needed, your **Emergency First Aid Kit**.
- **Know** how and where to turn off water, gas and electricity if the need arises.
- **Practice** your household's safety plan for every type of weather.

See more tips about severe weather and emergency supply kits at <https://richlandhealth.org/personal/weather-safety-tips/>

### VITAL STATISTICS

The Vital Statistics division maintains records of all births and deaths in Richland County since 1908. For information on obtaining a birth certificate, visit our website at [richlandhealth.org](http://richlandhealth.org) or call 419-774-4500.

	January	YTD
<b>Total Births</b> (all ages).....	95.....	95
Births to Teens .....	3.....	3
Repeat Births*.....	68.....	68
<b>Total Deaths</b> .....	244.....	244
Female.....	134.....	134
Male.....	110.....	110

### Causes of Death

Accidents (drugs/falls/crashes).....	1.....	1
Alzheimers/Dementia.....	21.....	21
Cancer.....	40.....	40
COVID-19 (Coronavirus).....	57.....	57
Flu/Pneumonia.....	5.....	5
Heart Related.....	52.....	52
Homicides.....	1.....	1
Lung Diseases.....	9.....	9
Renal/Kidney.....	5.....	5
Strokes/CVA.....	6.....	6
Suicides.....	3.....	3
Other (not listed above).....	26.....	26
Deaths Pending Autopsy.....	15.....	15

\*repeat birth= two or more live births  
Birth & Death statistics include City of Shelby

### March is National Nutrition Month

March is National Nutrition Month. RPH's **WIC (Women, Infants & Children) Program** is a Federally Funded Health & Nutrition Program, for Pregnant, Breastfeeding, Post-Partum women and children up to age 5. WIC provides:

- Individualized **nutrition counseling**
- Help in finding health care
- Breastfeeding **support and education**
- **Nutritious foods** such as eggs, milk, cheese, yogurt, cereal, whole grain bread, brown rice, whole wheat pasta, fruits, vegetables and canned tuna fish or salmon if you are breastfeeding. Infant formula, baby food and baby cereal is also available.

Make proper nutrition part of your **Emergency Supply Kit**. Remember healthy choices when you prepare and update your nonperishable food items.

WIC is federally-funded by the United States Department of Agriculture.

Call for a WIC appointment: Richland 419-774-4560 or Ashland 419-289-3359.

### Infant Mortality: Richland County

**January: 0** **Year To Date: 0**

Infant mortality is defined as the death of a baby before his or her first birthday. Infant deaths are considered an important indicator of the overall health of a society. Deaths of residents occurring outside of Richland County are not reflected in county death statistics. Remember:

**SAFE SLEEP ABC's: Alone, on Back, in a Crib.**

### CALLING THE HEALTH DEPARTMENT

Main Number.....	419-774-4500
Com. Health/Prev. Sciences.....	419-774-4761
Environmental Health.....	419-774-4520
Public Health Clinic.....	419-774-4700
Public Health Nursing.....	419-774-4540
WIC.....	419-774-4560



The Richland Public Health "Health Report" is a monthly production of the Community Health & Prevention Sciences Division. Suggestions and corrections, including mailing label corrections, are welcome. Call Shannon Nelson, CHPS Coordinator, at 419-774-4761 or email [snelson@richlandhealth.org](mailto:snelson@richlandhealth.org)

Richland Public Health is an equal opportunity employer/provider of services.

RETURN SERVICE REQUESTED

GET YOUR VACCINES!  
Call 419-774-4700 for appointment

