



2022 ANNUAL REPORT

For science. For action. For health.

Published March 2023





TABLE OF CONTENTS

3	Board of Health & Leadership
4	Vital Statistics
5	Financials
6	Community Health & Prevention Sciences
7	Environmental Health
8	Public Health Nursing
9	Women, Infants, and Children (WIC)
10	Service by the Numbers

Vision Our vision is to have the healthiest community possible where residents can enjoy optimal physical, emotional, and environmental health.

Mission Our mission is to assess, maintain, and improve the health and safety of the environment and community through quality public health services.

Professionalism

Richland Public Health personnel provide quality, customer focused services with respect for the diversity of the needs of the individual and the community.

Ethics

Richland Public Health personnel are accountable to the residents of Richland County to behave responsibly and in a trustworthy manner in the provision of services to the citizens of Richland County.

Collaboration

Richland Public Health personnel use innovation in public health through teamwork among health department divisions and with our community partners to respond to the needs of our community.

BOARD OF HEALTH

The Board of Health at Richland Public Health (RPH) plans or authorizes the department's activities. Board meetings are scheduled the third Monday of the month (except when closed for Federal Holiday) at 6 p.m. at 555 Lexington Avenue. Meetings are open to the public and the agenda provides an opportunity for public comment. Board members serve five-year terms. There are no term limits.

2021-2022 Richland Public Health Board Members

**Thelda Dillon · Abra Dunn · Stuart Durbridge, DVM · Robert Exten, MD · John Leech, DDS
Matthew Maiyer, RPh · David Remy · Cathy Sapp · Jean Swartz · Ary van Harlingen · Violet Wetzel
Dr. Daniel Burwell, Medical Director**



Richland Public Health Division Directors



Kevin VanMeter
Finance,
Registrar



Dr. Julie Chaya
Community Health &
Prevention Sciences



Joe Harrod
Environmental Health



Amy Schmidt
Public Health Nursing,
Clinic



Tina Picman
Women, Infants,
and Children

VITAL STATISTICS

The Vital Statistics division has maintained records of all births and deaths in Richland County since 1909 (excluding Shelby City). RPH can provide certified birth certificates for anyone born in Ohio. Death certificates are available for individuals who have passed away in Richland County (excluding Shelby). This division maintains statistics on births, deaths and causes of death to assist in planning health programs and services that meet the needs of our community.

Total Certificates issued (purchased or provided) in 2022 = 11,619

Birth Certificates = 5,354
Death Certificates = 5,306
Burial Permits = 959



Total Births in Richland County in 2022*: 1,307

Hospital Births.....1,263
Non-Hospital Births.....44
Repeat Births (two or more live births to same mother).....880

Total Deaths in Richland County in 2022*: 1,804

Female.....896
Male.....908

Causes of Death

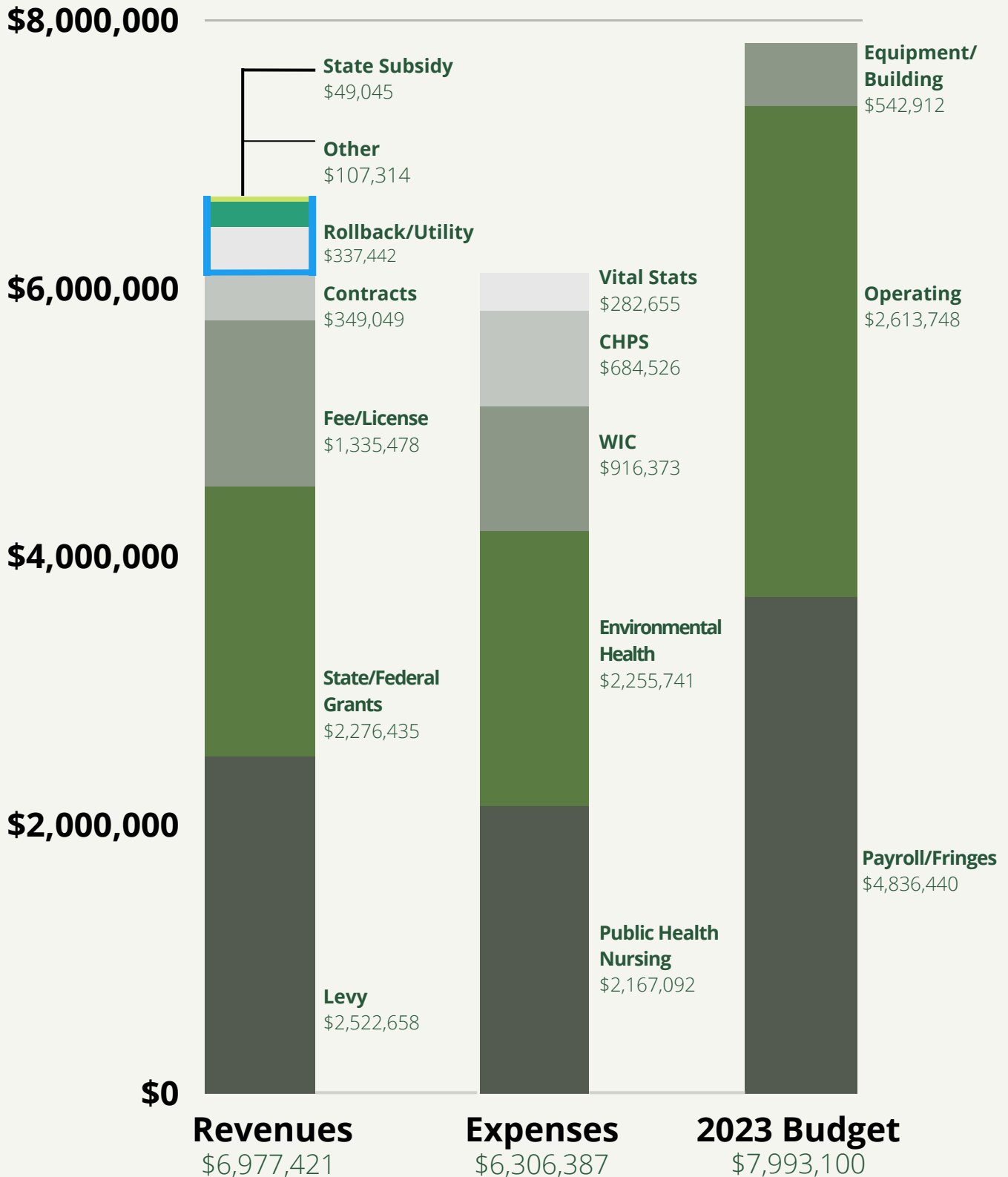
Accidents (drugs/falls/crashes).....88
Alzheimers/Dementia.....144
Cancer.....294
COVID-19 (Coronavirus).....110
Flu/Pneumonia.....83
Heart Related.....493
Homicides.....8
Lung Diseases.....83
Parkinson's.....16
Renal/Kidney.....68
Strokes/CVA.....67
Suicides.....31
Other Natural Causes.....319

*Note: Total Birth & Death statistics include the City of Shelby

If you were born in one of Ohio's 88 counties, you can purchase your birth certificate in person or online from Richland Public Health: richlandhealth.org/personal/birth-death-certificates

2022 FINANCIAL REPORT

RPH operates within an annual budget that is approved by the Board of Health. RPH is funded in several different ways, with the majority of funding derived from our two levies, federal and state grants, and fees/licenses. Payroll/benefits and operating costs account for the majority of the expenditures.



COMMUNITY HEALTH & PREVENTION SCIENCES

Community Health & Prevention Sciences (CHPS) is the art and science of studying and assessing community health needs. This involves organizing and providing comprehensive community health services, educational programming which will promote health, and prevent disease. We are committed to reducing the leading preventable causes of illness, disability, and death and promoting community health in Richland County.

The 2022 Community Health Assessment (CHA)

was deployed early in the year, to gather current data to assess the relevant needs and strengths of Richland County as it relates to community health.

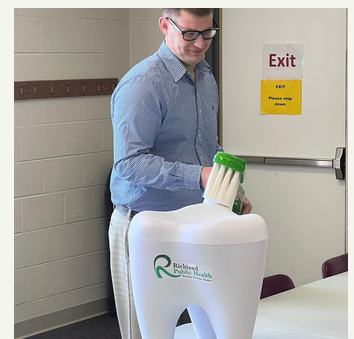
This tool (CHA) focused on three age groups: Children 0-11 years, Youth 12- 18 years, and Adults 19 + years. Vital information collected from residents of Richland County allows a better understanding of how our health system can best serve area residents. See more information at richlandhealth.org/livewell.



Menstrual Equity is commonly defined as affordability, accessibility and safety of menstrual products, menstrual education, and menstrual care. Through a partnership between RPH and Richland County Foundation Donors in 2022, the **FREE Flow Program** menstrual products were accessible to menstruators in all nine locations of the Mansfield/Richland County Public Library, the Middle School/High School Campus of Mansfield City Schools, and RPH. Menstruators also have access to FREE and timely menstrual education and resources that are updated each month. Learn more at richlandhealth.org/free-flow.

Pediatric Dental Health Program

Sponsored by the Richland County Foundation and generous donations from local and national partners, RPH provided **850 FREE Dental Health Kits** filled with toothbrushes, toothpaste, floss, fluoride treatment (for ages 6+), and age appropriate educational materials. In 2022, Butler Elementary students aged Preschool- 5th grade enjoyed a lively interactive presentation to educate them on the importance of good dental hygiene. Get information about how to participate in the FREE Dental Health program for youth ages 0-18 years at richlandhealth.org/dental.



ENVIRONMENTAL HEALTH

Environmental Health is the branch of public health that focuses on the relationships between people and their environment; promotes human health and well-being; and fosters healthy and safe communities. Environmental Health is a key part of any public health system. These specialists work to advance policies and programs to reduce chemical and other environmental exposures in air, water, soil, and food in order to protect and provide communities with healthier environments.



Mosquito Control

RPH makes preventing the spread of mosquito-borne diseases a priority. RPH educates the community on ways to protect themselves from mosquito bites and by eliminating mosquito habitats found on their property. During the 2022 season, the truck mounted-mosquito sprayer was used to target adult mosquitos in areas where thresholds were met or mosquitos tested positive for West Nile Virus. Of the 15,891 mosquitoes submitted by RPH for testing, six (6) identified groups were positive for West Nile Virus.

Private Water Systems

RPH conducts site visits, validates and issues permits for installing new private water systems or altering an existing private water system. In 2022, RPH issued 120 permits for installing new or altering an existing system. When an Environmental Health Specialist completes a final onsite inspection, the system is checked for health code compliance and a water sample is collected and sent to be analyzed by the water quality lab.



Food Safety Division

The food safety division at RPH licenses and inspects food service operations and retail food establishments which also includes permanent, temporary, mobile, or vending facilities. RPH Environmental Health Specialists ensure our community is better protected against food borne illnesses that may result from unsanitary practice.

PUBLIC HEALTH NURSING

Public Health Nursing is the practice of promoting and protecting the health of populations using knowledge from nursing, social, and public health sciences. Working with communities, public health nurses are able to educate people about health issues, improve community health and safety and increase access to care. RPH has two distinct areas of Public Health Nursing Services: The Public Health Clinic and Public Health Nursing.

Emergency Preparedness: RPH has an experienced staff capable of planning, training, exercising, and leading a response within the community and coordinating the efforts with local, regional, and state partners. We have planned for all hazards, including disease outbreaks. During 2022, the pandemic tested our capabilities in the 6 preparedness domains, which are: Biosurveillance; Community Resilience; Countermeasures and Mitigation; Surge Management; Incident Management and Information Management.

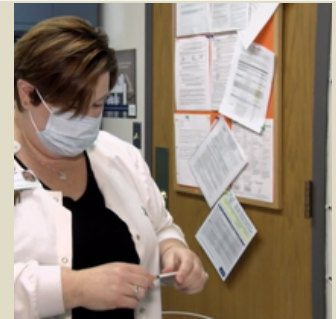


RPH provided **Naloxone training and kits** to law enforcement agencies, first responders, community agencies, and community members across Richland County. Naloxone is a medication that can be given to reverse opioid overdoses and potentially save lives. Learn more at <https://richlandhealth.org/narcan-training/>.

Community Health Screenings were held in various locations across Mansfield and Richland County. Public health nurses performed the screenings by checking blood pressure, checking blood sugars, and cholesterol levels and anemia checks with a single drop of blood.

Richland Public Health Clinic

The clinic provided child, teen and adult immunizations. Travel immunizations and consultation were available to individuals traveling internationally. Tuberculin Skin Tests were also provided by the public health nurses in the clinic.



COVID-19 Test Kits were distributed to the community and community partners. Some kits were at-home antigen tests that provided results in 15 minutes. We also distributed "test to treat" kits which provided access to a telehealth visit with a care provider who could prescribe a COVID-19 antiviral treatment if needed for an eligible person.

WOMEN, INFANTS, AND CHILDREN (WIC)

The Special Supplemental Nutrition Program for Women, Infants, and Children (WIC) is federally funded through the USDA. WIC's mission is to provide supplemental foods, health care referrals, and nutrition information to qualifying pregnant, breastfeeding, postpartum women, and to infants and children up to age 5 who are at risk. WIC is the nation's premier and most cost effective public health nutrition program. Currently, WIC serves 53% of all infants born in the U.S.



The WIC Program Provides:

- Individualized nutrition education by Registered Dietitians.
- A wide variety of nutritious foods purchased with the WIC EBT card at WIC-approved stores.
- Breastfeeding counselors who educate and support breastfeeding mothers.
- Referrals to healthcare and social service agencies.
- Farmer's Market coupons worth \$30 redeemable at local summer Farm Markets

Formula Shortage

The nation experienced a shortage of infant formula in 2022 and WIC was there to help. WIC staff visited stores and notified moms where to find supplies of formula and when necessary, WIC offered equivalent formula alternatives.

WIC provides highly nutritious foods including milk, eggs, yogurt, iron fortified cereals, infant formulas, fresh, canned, or frozen fruits and vegetables, whole grain foods, peanut butter, cheese. Canned tuna or salmon is available for breastfeeding moms.

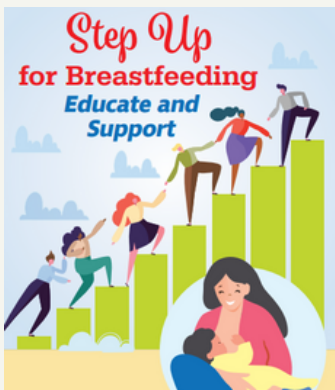
WIC Eligibility

If you are a pregnant, breastfeeding, or postpartum woman, have kids under the age 5, are at nutritional risk and receive SNAP, TANF, Medicaid or meet the WIC Federal Income Guidelines, you will qualify for WIC!

Monthly Value of WIC Foods

Formula Fed Baby*	\$105-\$400
Breastfed Baby 6-12 months	\$64
Children ages 1-5 years	\$75
Pregnant Woman	\$101
Postpartum Woman	\$87
Breastfeeding Mom	\$128

*Value Depends on Type of Formula Needed



Did You Know?

A WIC breastfeeding specialist can help moms get a breast pump? They can also help find solutions to dealing with latch, tongue tie, and low milk supply. For more information visit www.richlandhealth.org/wic

Federal Income Guidelines

Family Size	Monthly Income
2	\$2,823
3	\$3,551
4	\$4,279
5	\$5,006

PUBLIC HEALTH SERVICES BY THE NUMBERS

RPH provides public health services throughout Richland County. From communicable disease investigation, to immunizations and food inspections, RPH staff was there to make Richland County a healthier place to live and work.

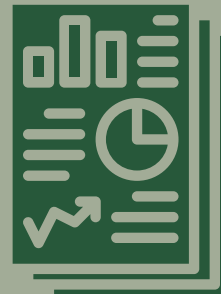
Communicable Diseases reported in 2022.

Campylobacteriosis.....	23
Chlamydia.....	484
COVID-19.....	13,240
Gonorrhea.....	161
Hepatitis B Chronic.....	14
Hepatitis C Chronic.....	83
Influenza Hospitalizations.....	92
Lyme Disease.....	13
Salmonellosis.....	16
Syphilis.....	25

This is not a complete list and includes confirmed, probable and suspect cases reported 01/01/2022-12/31/2022 according to AOC and ORC sections 3701.

Public Health Clinic services delivered in 2022.

Immunizations given.....	2,325
International Travel Immunizations given.....	80
Clinic Appointments.....	2,891
COVID Vaccinations.....	1,136
Tuberculosis Skin Tests & Readings.....	469



Public Health Nursing services delivered in 2022.

Children with Medical Handicaps (CMH) (family contact hours).....	4,752
CMH Children served.....	500
CMH Home Visits.....	171
Community Health Screenings.....	825
Blood Glucose.....	218
Blood Pressure.....	286
Cholesterol.....	33
Hemoglobin/Hematocrit.....	186
Newborn/Prenatal Home Visits.....	54
School Nurses (contract hours).....	1,629

PUBLIC HEALTH SERVICES BY THE NUMBERS CONTINUED

Food Inspections Total in 2022 = 1,703

Food Facilities.....	1,381
Temporary.....	113
Vending.....	47
Mobile.....	162



WIC Total Contacts (Ashland and Richland) in 2022 = 10,222

New Participants (1st time sign up).....	2,041
Recertifications.....	1,464
Other Contacts.....	6,717

What Else Did We Do in 2022?

Cribettes distributed.....	49
Dental Health Kits distributed.....	850
Ohio Buckles Buckeyes car seats installed.....	70
Personal Car seats checked for safety.....	40
Deterra Packets distributed.....	300
Naloxone Kits distributed.....	180
COVID-19 Test Kits distributed.....	13,704

Community Collaborations in 2022:

The staff at Richland Public Health is privileged to serve the community in many ways. Our mission is accomplished through the far-reaching relationships and collaborations in our community members and partners. A Community who shares our passion for the safety, health and well being of the citizens of Richland County.





For questions or additional information,
please contact:

chps@richlandhealth.org
419-774-4500
richlandhealth.org

