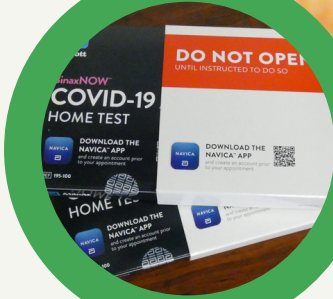
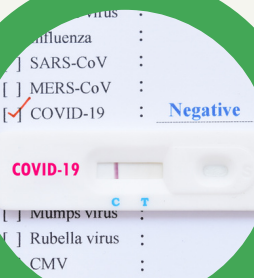


Richland Public Health

Prevent. Promote. Protect.



2021 | ANNUAL REPORT

FOR SCIENCE. FOR ACTION. FOR HEALTH.

Learn how our agency has protected your health, advanced health equity, and strengthened public health practice in Richland County this past year.



TABLE OF CONTENTS

03 Board of Health

04 Vital Statistics

05 Financials

06 Community Health & Prevention Sciences

07 Environmental Health

08 Public Health Nursing

09 Women, Infants and Children (WIC)

10 Health Commissioner's Remarks





Richland Public Health

Prevent. Promote. Protect.



Dr. Daniel Burwell
Medical Director

BOARD OF HEALTH

The Board of Health at Richland Public Health plans or authorizes the department's activities. Board meetings are scheduled the third Monday of the month (except January and February) at 6 p.m. at 555 Lexington Avenue. Meetings are open to the public and the agenda provides an opportunity for public comment. Board members serve five year terms. 2020-2021 Members: Barbara Cinadr RN, Thelda Dillon, Abra Dunn, Stuart Durbridge DVM, Robert Exten MD, John Leech DDS, Matthew Maiyer RPh, Dave Remy, Cathy Sapp, Jean Swartz, Ary van Harlingen, and Violet Wetzel.

Mission

Our mission is to assess, maintain, and improve the health and safety of the environment and community through quality public health services.

Vision

Our vision is to have the healthiest community possible where residents can enjoy optimal physical, emotional, and environmental health.

Professionalism

Richland Public Health personnel provide quality, customer focused, services with respect for the diversity of the needs of the individual and the community.

Ethics

Richland Public Health personnel are accountable to the residents of Richland County to behave responsibly and in a trustworthy manner in the provision of services to the citizens of Richland County.

Collaboration

Richland Public Health personnel use innovation in public health through teamwork among health department divisions and with our community partners to respond to the needs of our community.





Kevin VanMeter
Director of Finance
Registrar

VITAL STATISTICS

The Vital Statistics division at Richland Public Health maintains records of all births and deaths in Richland County since 1909 (excluding Shelby). Richland Public Health can provide certified birth certificates for anyone born in Ohio. Death certificates are available for individuals who have passed away in Richland County (excluding Shelby). This division maintains statistics on births, deaths and causes of death to assist in planning health programs and services that meet the needs of our community.

Total Births in Richland County: 1,406

Repeat Births (two or more live births to same mother)....	807
Hospital Births.....	1,307
Non-Hospital Births.....	99
Teen births with 41.4% to 19-year-old teens.....	87
Teens had a second baby.....	12
Births were to married teens.....	5
6.2% of total births were to teens, the second lowest rate since tracking began in 1991 (32 years)	

***Note: Total Birth & Death statistics include City of Shelby**

Total Deaths in Richland County: 1,750

Female.....	852
Male.....	898

Causes of Death

Accidents (drugs/falls/crashes).....	102
Alzheimers/Dementia.....	132
Cancer.....	240
COVID-19 (Coronavirus).....	301
Flu/Pneumonia.....	46
Heart Related.....	491
Lung Diseases.....	93
Renal/Kidney.....	62
Strokes/CVA.....	65
Suicides.....	23

12,741 Certificates Issued (purchased/provided) in 2021

Birth Certificates = 6,003
 Death Certificates = 5,711
 Burial Permits = 1,027

2021 FINANCIAL REPORT

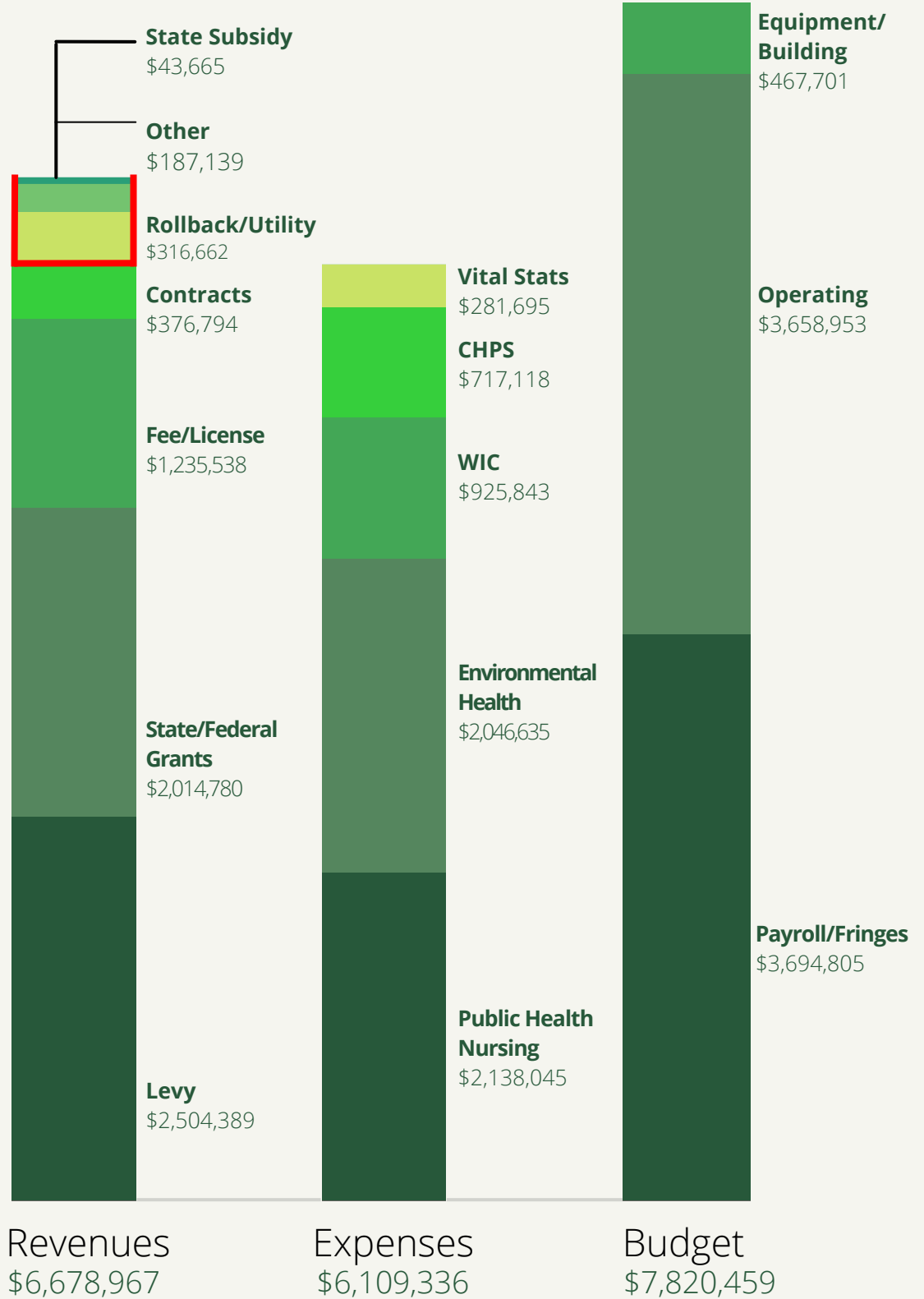
\$8,000,000

\$6,000,000

\$4,000,000

\$2,000,000

\$0





Julie Chaya PhD, MEd, MA
Director, Community Health & Prevention Sciences

COMMUNITY HEALTH & PREVENTION SCIENCES

Community Health and Prevention Sciences (CHPS) is the art and science of studying and assessing community health needs. This involves organizing and provisioning comprehensive community health services, and doing the work of educating and developing healthcare programs. The objective of that work is promoting health and preventing diseases. We are committed to reducing the leading preventable causes of illness, disability, and death -and promoting community health – in Richland County.

#CountOnMeRC

The Richland County Unified Messaging Team launched the "Count On Me RC" campaign in an effort to keep the Richland County Community up-to-date about COVID-19 facts, suggested guidelines, local impact and ways to support ourselves and each other. Led by Dr. Julie Chaya, the team includes area leaders and community experts, combining their resources to serve all of Richland County. Through social media, media outlets, bus ads and direct mailers, #CountOnMeRC was able to provide important information about COVID-19 guidelines, prevention practices and COVID-19 vaccines. For more information please visit www.countonmerc.org



Black & Brown Community COVID-19 Needs Assessment

Research shows that racial and ethnic minority people are disproportionately affected by COVID-19 in the United States. RPH, in collaboration with community partners, developed and implemented this local Needs Assessment to identify the local needs and concerns of racial and ethnic minority people living in Richland County regarding COVID-19. In an effort to decrease the number of barriers, the survey was widely accessible to take either online, over the phone, or in-person. Advertisements and opportunities to participate in the survey were available at local churches, community centers, community events, food pantries, and barbershops in the targeted audiences' neighborhoods. One hundred and sixty (160) assessments were collected April 12 - April 30, 2021. Of those 160 assessments, 123 assessments met the participation criteria. To meet the criteria, respondents had to 1) live in Richland County, Ohio, 2) be over the age of 18, and 3) identify as a Black or Brown Community member. The results, analysis, and conclusions of this needs assessment have supported the development of community programs, resources, and initiatives to better serve Richland County's Black and Brown population throughout the COVID-19 pandemic. To view the results of the Black & Brown Community COVID-19 Needs Assessment, please visit www.richlandhealth.org/richlandbb



Diaper Duty Stations

Donte Palmer, a Florida father, tweeted in 2018 a photo of himself squatting in a stall and changing his son's diaper on his legs. Palmer was forced to the squatting position after he was unable to find a changing table inside a men's restroom. This tweet went viral and Palmer founded #SquatForChange – an organization committed to arming dads with the proper changing tables to be hands-on with their children. Procter & Gamble's diaper brand, Pampers, found that 9 out of 10 dads have gone into a public restroom, only to not find a changing table. Therefore, they joined the fight with Palmer to properly equip public restrooms with these resources. Procter & Gamble pledged to install 5,000 changing tables in men's restrooms throughout the U.S. by 2021. RPH joined the movement and successfully installed 46 Diaper Duty Stations in men's restrooms throughout Richland County. In addition to the changing tables, RPH also included a disposable liner dispenser and 500 disposable changing table liners for each participating restroom.



Excuse Me,
WE NEED TO DO A DIAPER CHANGE!

Register your organization's Men's Restroom for a **FREE Diaper Duty Station!**



Prevent. Promote. Protect.



Joe Harrod REHS
Director, Environmental Health

ENVIRONMENTAL HEALTH

Environmental Health is the branch of public health that focuses on the relationships between people and their environment; promotes human health and well-being; and fosters healthy and safe communities. Environmental Health is a key part of any public health system. This field works to advance policies and programs to reduce chemical and other environmental exposures in air, water, soil, and food in order to protect and provide communities with healthier environments.

Food Safety Division

Richland Public Health's Environmental Health Specialists protect our community against food-borne illnesses that may result from unsanitary working conditions; improper food handling, preparation, or storage; unsafe sources; and improper cooking, holding or cooling temperatures.

RPH licenses and inspects food service operations (FSO) and retail food establishments (RSO), temporary and mobile FSO/RFE, and vending facilities to ensure public health and safety.

2021 Food Inspections = 1625 Total

	# Completed	% Total
Mobile	145.....	9%
Temp	93.....	5.7%
Vending	74.....	4.5%
Risk Level 1	112.....	26.8%
Risk Level 2	101.....	16.2%
Risk Level 3	590.....	36.3%
Risk Level 4	510.....	31.3%



Mosquito Control

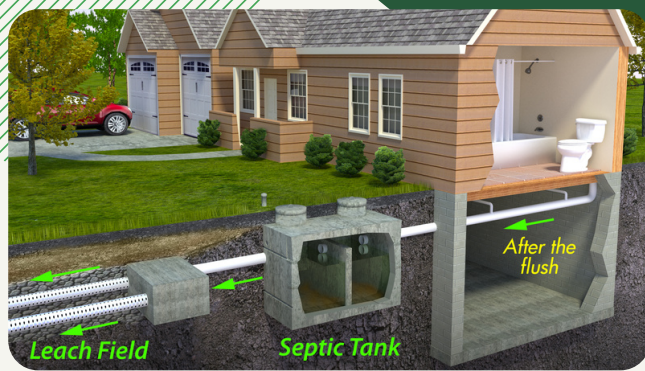
Preventing the spread of mosquito-borne diseases is a priority at Richland Public Health. Our truck mounted-mosquito sprayer equipment treated 3,329.6 acres, targeting adult mosquitoes in the 2021 season. Over the past year, RPH submitted 27,375 mosquitoes for testing. Eight (8) identified groups of those mosquitoes tested positive for West Nile Virus. RPH educates the public on ways to protect themselves from mosquito bites by eliminating mosquito habitats found on their property and by reducing sources of standing water.

Sewage Treatment Systems

RPH conducts site reviews as well as validates and issues permits for installing new private household sewage treatment systems or altering an existing sewage treatment system. RPH issued 107 permits for altering or replacing systems in 2021.

An Environmental Health Specialist goes on-site to conduct a final inspection of the system to ensure health code compliance.

Consultations provided by RPH help identify problems and safe solutions for failing or malfunctioning systems. System complaints are also investigated, with appropriate actions taken to eliminate any public health issues.





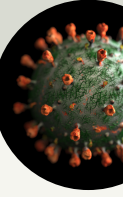
Amy Schmidt BSN, RN
Director, Public Health Nursing

PUBLIC HEALTH NURSING

Public Health Nursing is the practice of promoting and protecting the health of populations using knowledge from nursing, social, and public health sciences. Working with whole communities, public health nurses are able to educate people about health issues, improve community health and safety and increase access to care. Richland Public Health has two distinct areas of Public Health Nursing Services: the Public Health Clinic and Public Health Nursing.

Communicable Disease Investigation and Surveillance

Richland Public Health nurses and the epidemiologist coordinate communicable disease investigation, surveillance and reporting per the Ohio Department of Health Guide for Reportable Infectious Diseases in Ohio (OAC 3701-3). Electronic surveillance systems are also used to monitor disease prevalence and syndromic surveillance in Richland County. The staff works closely with laboratories, hospital systems, schools, and businesses in the identification and prevention measures needed to prevent the spread of infectious diseases. Our staff also collaborate with the RPH Environmental Health Division to investigate foodborne illness and other environmental-related diseases that may impact the health and safety of the community.



Prenatal and Newborn Home Visiting Program

Newborn Home visiting supports healthy growth and development from pregnancy through the first few years of life. During free home visits, a public health Registered Nurse provides information, support and connections to community resources that can help families in Richland County. The visits allow opportunities to share concerns and receive information about pregnancy/parenting. Cribettes are distributed to eligible families as one way to ensure every infant has a safe place to sleep. Adjustments were made in 2021 to ensure connections took place via phone with pregnant and new mothers. Although there were fewer newborn home visits in 2021 than most years, those visits generated 674 referrals to community agencies.



Public Health Clinic Adjusts to the Needs of the Community

The Public Health Clinic's primary focus in 2021 was administering COVID-19 vaccinations to the community. Vaccination clinics were held several days a week January-April to state-identified priority groups and expanding then to all who desired a COVID-19 vaccination series. Late May, RPH resumed normal clinic operations with tuberculin skin tests and adult and pediatric immunizations. In the fall, the clinic again responded to the COVID-19 case increase by expanding the appointment offering to meet the increased demand for COVID-19 vaccinations and boosters.



PUBLIC HEALTH CLINIC - 2021

Immunization Visits	1,121
International Travel (visits/consults).....	11
Clinic Appointments.....	1,133
COVID Vaccinations.....	9,132
Total Visits.....	10,265

PUBLIC HEALTH NURSING - 2021

CMH (family contact hours)	4,900
Community Health Screenings	128
Influenza Vaccines.....	65
Newborn/Prenatal Home Visits.....	70
Cribettes Distributed.....	57
School Nurses (hours/student care).....	1,629

COMMUNICABLE DISEASES - 2021

Infectious Diseases (other than Flu/STI) ...	217
Coronavirus.....	15,307
Hospitalizations due to COVID-19.....	636
Influenza (A&B).....	<10

Sexually Transmitted Infections	
STI Positive Results.....	700
Chlamydia	531
Gonorrhea.....	165
Syphilis	<10

2021 COVID-19 Cases by the Numbers

16,944 New Cases (age range <1 year to 105 years).
571 cases resulting in deaths of individuals ranging from 23 years to 98 years.
Majority of deaths (70%) had a preexisting condition.



Tina Picman MS, RDL, CLC
Director, WIC

THE SPECIAL SUPPLEMENTAL NUTRITION PROGRAM FOR WOMEN, INFANTS, AND CHILDREN (WIC)

The Special Supplemental Nutrition Program for Women, Infants, and Children (WIC) is federally funded through the USDA. WIC's mission is to provide supplemental foods, health care referrals, and nutrition information to qualifying pregnant, breastfeeding, postpartum women, and to infants and children up to age 5 who are at risk. WIC is the nation's premier and most cost effective public health nutrition program. Currently, WIC serves 53% of all infants born in the U.S.

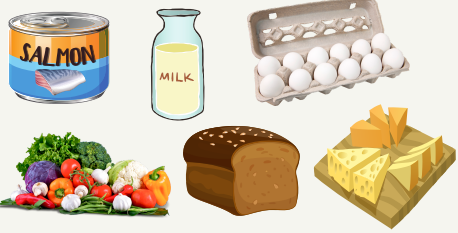


- ### The WIC Program Provides Participants With:
- Registered Dietitians who provide all participants with individualized nutrition education.
 - A wide variety of nutritious foods purchased with WIC EBT card at WIC-approved stores.
 - Breastfeeding counselors who educate and support breastfeeding mothers.
 - Referrals to healthcare and social service agencies.

Welcome to "QUICK WIC" Appointments

USDA provided Waivers to protect the health and safety of both WIC participants and staff during the COVID-19 pandemic. The Waivers extend through July 2022. By completing most of the WIC application over the phone, in-person visit times are now shorter.


- Step 1-**The first part of the appointment is done over the phone at the participant's convenience.
Step 2- The final part of the appointment requires the WIC participant to come to the WIC Office. WIC information is given to the participant. Documents required for participation are copied by the staff. WIC foods are loaded to the official WIC EBT card and given to the WIC participant. THAT'S A – "QUICK WIC" Appointment!!



How to Qualify for WIC?

Must be a pregnant, breastfeeding or postpartum woman or an infant, toddler or child up to age 5 who **must also**:

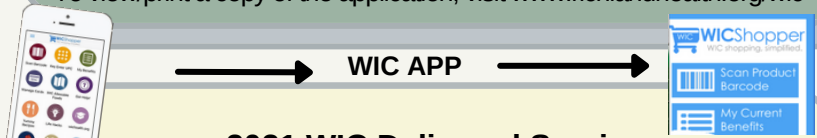
1. Live in Richland/Ashland County
2. Have a health or nutrition risk
3. Meet Income Guidelines (Below)



How to Apply for WIC

Call WIC for an appointment: Richland County Office 419-774-4560
 Ashland County Office 419-289-3359
or
Email a completed application to: wicrichlandashland@odh.ohio.gov
or
Mail a completed application to: Richland County WIC
 555 Lexington Ave Mansfield, OH 44907

*To view/print a copy of the application, visit www.richlandhealth.org/wic



2021 WIC Delivered Services

New Participants (1st time sign up).....	1,900
Recertifications.....	1,903
Other Contacts.....	5,795
Total Contacts (Ashland and Richland) =	9,598

Federal Income (before taxes) Guidelines

Family Size	Annual Income	Monthly Income	Weekly Income
1	\$23,828	\$1,986	\$459
2	\$32,227	\$2,686	\$620
3	\$40,626	\$3,386	\$782
4	\$49,025	\$4,086	\$943
5	\$57,424	\$4,786	\$1,105
6	\$65,823	\$5,486	\$1,589



Sarah Humphrey, MPH, CPH, REHS
Health Commissioner

The public health commissioner shall be charged with the enforcement of all sanitary laws and regulations in the district. The commissioner shall keep the public informed in regard to all matters affecting the health of the district.

Ohio Revised Code 3709.11



Closing Remarks from the Health Commissioner, Sarah Humphrey

After the hardships of the last two years, I would be remiss not to recognize the hard work of dedicated leaders and the entire workforce of the Richland County public health system (hospitals, schools, local government, public health, social services, faith-based organizations, etc.). At times of crisis, these individuals rose to the challenge to help guide our community through the most arduous leg of the COVID-19 pandemic with compassion, grace and a commitment.

Although 2021 perpetuated a time of immense uncertainty, personal difficulty, and distrust, it is with optimism and resiliency that we look toward 2022 as a year of identifying those areas of improvement within our community and the health approach within, and make the changes to ensure not a single community member lives one less avoidable day of optimal health.

In 2021 we dove deep into the why's of health behavior, we held the hard conversations regarding health inequity and distrust, we felt the loss of life within our community, our friends, our family. However, we endured. We re-dedicated ourselves to meeting people where they need us most, at the churches, at places of work, and in the places where every day life is lived, not just in a brick-and-mortar building.

During this time of recovery, we must not misstep. We must continue to recognize that large movements in improving health occurs first among individuals, living in their own beloved towns, in their school districts and counties – where people feel a sense of belonging and community, where the direct work of health improvement is felt among family and friends.

And to our community, our committed partners and the wide range of colleagues who embodied the principle that “public health is everyone’s business” during 2021, Richland Public Health would like to express our sincere admiration.

With grateful thanks to you all,

Sarah Goodwill Humphrey



CONTACT US

COMMUNITY HEALTH & PREVENTION SCIENCES

DRUG FREE COMMUNITIES - PERSONAL RESPONSIBILITY EDUCATION PROGRAM - DENTAL HEALTH

Phone: 419-774-4761

E-mail: chps@richlandhealth.org

ENVIRONMENTAL HEALTH

PERMITS - FOOD LICENSES AND INSPECTIONS - PLUMBING INSPECTIONS - TATTOO INSPECTIONS

Phone: 419-774-4520

Email: enverichlandhealth.org

PUBLIC HEALTH CLINIC

CHILD AND ADULT IMMUNIZATIONS - TB TESTING - TRAVEL IMMUNIZATIONS - COVID-19 VACCINES

Phone: 419-774-4520

Email: phn@richlandhealth.org

PUBLIC HEALTH NURSING

NEWBORN HOME VISITS - COMMUNITY HEALTH SCREENINGS

Phone: 419-774-4540

Email: phn@richlandhealth.org

VITAL STATISTICS

BIRTH CERTIFICATES - DEATH CERTIFICATES - BURIAL PERMITS

Phone: 419-774-4500

Email: vitalstatistics@richlandhealth.org

WIC

NUTRITIOUS FOOD FOR CHILDREN UP TO AGE 5 - PREGNANT AND NEW MOTHERS

Phone Mansfield: 419-774-4560

Phone Ashland: 419-289-3359

Email: tpicman@richlandhealth.org



Connect with Us!



Our website: richlandhealth.org



Facebook: "Richland Public Health"



Instagram: "richlandhealth"



LinkedIn: "Richland Public Health"



Twitter: "@richlandhealth1"



YouTube: "Richland Public Health"

555 Lexington Avenue
Mansfield, Ohio 44907